

Alaska Department of Fish and Game

Habitat Section
Southeast Region



112-12-10160 Tributary 2

ADDITION

Waterbody name:

Survey date: 8/4/22, 8/18/22

Quad: Sitka C-4

Species & Lifestage:

Upper Reach Latitude: 57.722020 **Longitude:** -135.116398

Survey crew: FC, RR, JL

Lower Reach Latitude: 57.723740 **Longitude:** -135.113893

Findings: We surveyed this uncataloged stream using a backpack electrofisher and a GPS and captured juvenile coho salmon, Dolly Varden, and observed pink salmon spawning (Figure 1). The stream channel is forested and low gradient with suitable spawning gravel throughout the area surveyed (Table 1; Figures 2, 3).

Recommendations: Add this uncataloged stream to the anadromous waters catalog for rearing coho salmon and pink salmon presence and spawning (Figure 4).

Nomination: Pending

Table 1.—112-12-10160 tributary 2 survey data.

Waypoint	Latitude	Longitude	Notes	Stream Width ft	Stream Substrate	Habitat Features	Gradient %	Sample Effort	Sample Results
1308	57.724010	-135.113863	Waypoint for route correction of cataloged stream. Stream bends to cross road at ~30' tall bridge. Adult pinks observed from bridge on 8/18/22 return.						
1309	57.724984	-135.116994	24in CMP that is extremely rusted, most of the bottom has rusted out. Stream has very low flow and goes in and out of being subsurface often around both the inlet and outlet. At the inlet half of it is blocked by debris	2-4	Small Gravel Fine Organic		2-4	EF	No Fish
1532	57.724044	-135.114944	On Tributary. Old bridge in stream.	6-8	Small Gravel		2-4	EF	3 DV
1533	57.723755	-135.114368	Pink salmon spawning	6-8	Large Gravel		2-4	EF	7 P
1534	57.723548	-135.115046	Rock cascade. Pinks spawning.		Large Gravel		2-4	EF	2 CO 15 P
1535	57.722903	-135.115204	Pinks spawning. Transitioning up in grade.	6-8	Large Gravel		2-4	EF	3 CO 5 P 6 DV
1536	57.722124	-135.115801	2 ft tall log falls.					EF	2 CO
1537	57.722024	-135.116419	Tributary on river right.					EF	2 CO 2 DV
1538	57.722000	-135.116770						EF	2 DV



Figure 1.—Juvenile coho salmon captured at waypoint 1534.



Figure 2.—Channel downstream of waypoint 1533.



Figure 3.—Channel upstream of waypoint 1312.

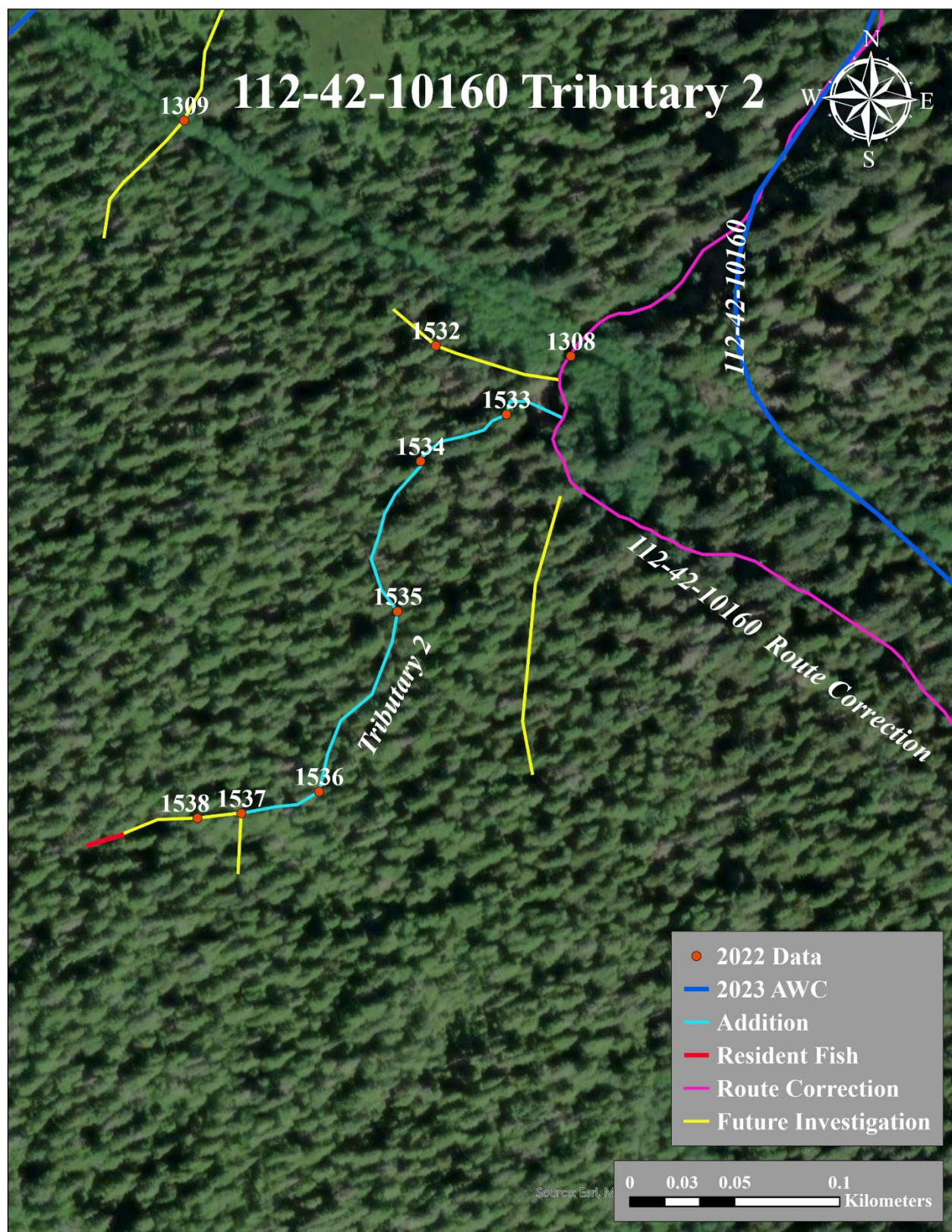


Figure 4.-112-12-10160 tributary 2 addition map.